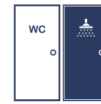


Commercial 30CM RIMLESS INFANT SCHOOL WC PAN



WASHROOM
WAREHOUSE



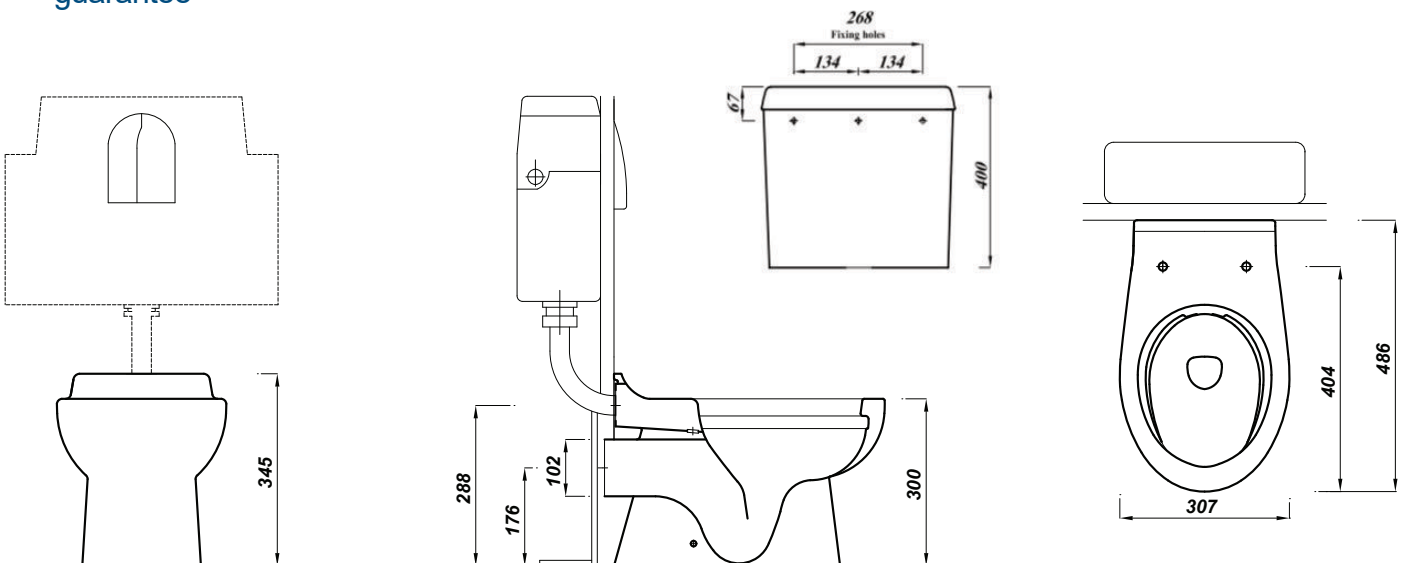
Product Code	40046
Outlet	Horizontal
Weight (Kg)	16.1
Fixing kit included	Yes
Material	Vitreous China
Flushing Volume (Ltr)	4/2.6

Key features:

- CE Compliant
- Rimless design
- Three in one pan configuration
- Lifetime ceramic guarantee*

Description:

Designed for early years settings, this 300mm height toilet is designed for infant users. The pan is specifically engineered to be used in a back to wall, close coupled or low level configuration.



All dimensions are approximate and subject to normal ceramic variation. Although every effort is made not to change the above product specification, Washroom Warehouse reserve the right to do so without prior notification if necessary. *Against manufacturers defects. Full information on guarantees available upon request.