

## TAP CONTROL SYSTEM - TACTILE SWITCH KIT FOR HS BACKPLATES

Model line: SAFE ENSUITE CONTROL SYSTEMS



### AT07-014

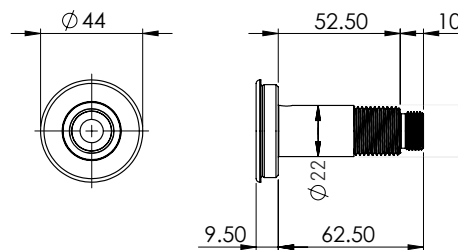
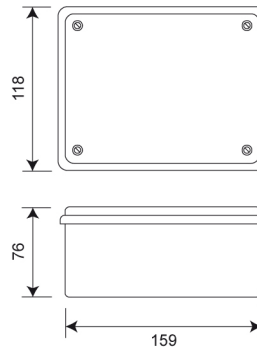
#### TAP CONTROL SYSTEM - TACTILE SWITCH KIT FOR HS BACKPLATES

The tap control system can be used to control mixed water for 1 or 2 taps, or to control both hot and cold on a single tap using 2 sensors. The control system can be used with wave-on or tactile sensors.

The tap control system also features built-in purge control option to avoid stagnation.

#### Technical data

Material	ABS
Gross weight	0.70 kg
Type of mounting	Wall mounted
Power source	Mains
Voltage	230V a.c.
Sensor voltage	5V DC
Valve voltage	12V DC
Valve power	3W normally closed
Control inputs	Sensor 1, sensor 2
Control outputs	Valve 1, valve 2
Control configuration	Controls valves for 1 or 2 spouts, or hot and cold valves for single spout
Operation type	Tactile switch
IP rating	54
Current	0.055A
Frequency	50Hz
<b>Settings</b>	
Adjustable timing	6 - 20 secs (Default 6 secs)
Purge facility	Yes (ON / OFF) Default OFF
Operations lock out	Yes (ON / OFF)
<b>Kit Contents</b>	
AT07-001	Tap control system for 1 or 2 taps
AC17-101	Anti-Microbial 12V DC Normally Closed Solenoid Valve
VR00-005	Tactile switch for backplates - blue insert
VR00-006	Tactile switch for backplates - red insert



**ALL DIMENSIONS IN MM  
UNLESS STATED OTHERWISE**